

Industrial Radio Remote Controls

TELECRANE™
F21 Series and F24 Series

Internal
HORN
Option

For the F24 Series



SECURE, RELIABLE and **EASY TO USE** with

- Industrial Cranes • Hoists • Winches • Overhead Doors • Lifts •
- Monorails • Truck Equipment and Other Industrial Applications •

ITL INTERCONTINENTAL
TECHNOLOGIES, LTD
A Proven Leader Since 1991

F21 SERIES

F21-2S now also available with a new, more compact receiver: 3.4" x 3.3" x 6.7"
 (Please visit Telecrane.com for details)



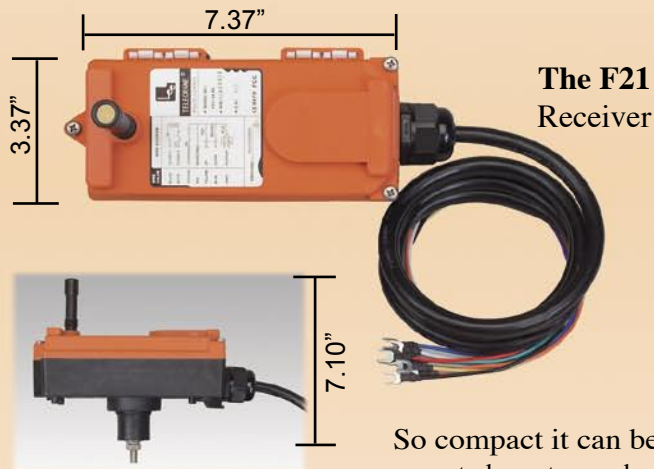
F24 SERIES

Visit Telecrane.com to see the new additions to our F24 Series:
 • Six motion transmitters; models F24-12S & F24-12D
 • N1 style transmitters with larger pushbuttons



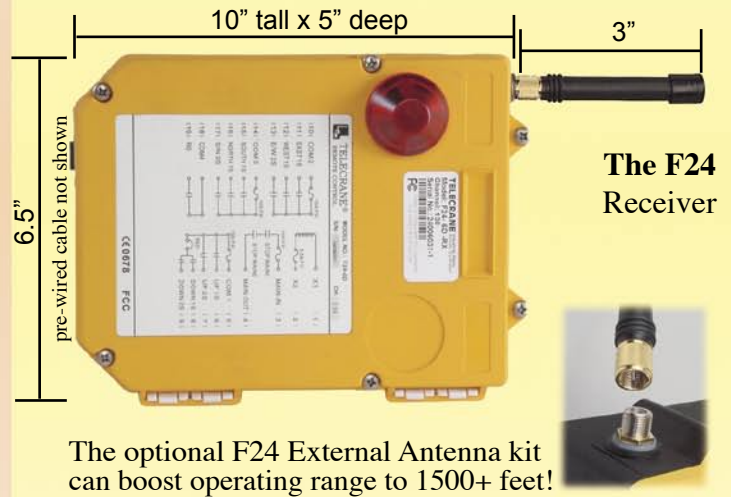
TECHNICAL SPECIFICATIONS

Transmitter	F21-2S / F21-2D	F21-4S / F21-4D	F21-6S	F24-6S / F24-6D	F24-8S / F24-8D	F24-10S / F24-10D
Dimensions	5.2" x 1.75" x .9"	6.2" x 2.4" x 2"	6.2" x 2.4" x 2"	7.25" x 2.4" x 2"	7.25" x 2.4" x 2"	7.25" x 2.4" x 2"
Weight	5 ounces	9 ounces	9 ounces	11 ounces	11 ounces	11 ounces
Operational Distance	Up to 150 feet	Up to 250 feet	Up to 250 feet	Up to 500 feet	Up to 500 feet	Up to 500 feet



The F21 Receiver

So compact it can be mounted most anywhere!



The F24 Receiver

The optional F24 External Antenna kit can boost operating range to 1500+ feet!

GENERAL SPECIFICATIONS for both F21 & F24 series

Frequencies Available: 310-320Mhz and 428-438Mhz, 76 Channels, Generated by Crystal
 • Environmental Rating: IP 65 • Temperature Rating: -31°F to 167°F (-35°C to 75°C) • Power Supply Input (X1 & X2): 110/220 V AC or 12-24 V AC/DC • Relays rated at 10amps / 250VAC • Receivers pre-cabled • Transmitters have removable on/off safety key • Main line relay engaged on start, except F21-2S & 2D styles: mainline engaged on any button pressed • Transmitter Case Material: Shock resistant, fiber reinforced nylon • Transmitter Power Source: 2 "AA" Alkaline batteries • Buttons tested to 2 Million Cycles • Transmitter Battery Indication: LED

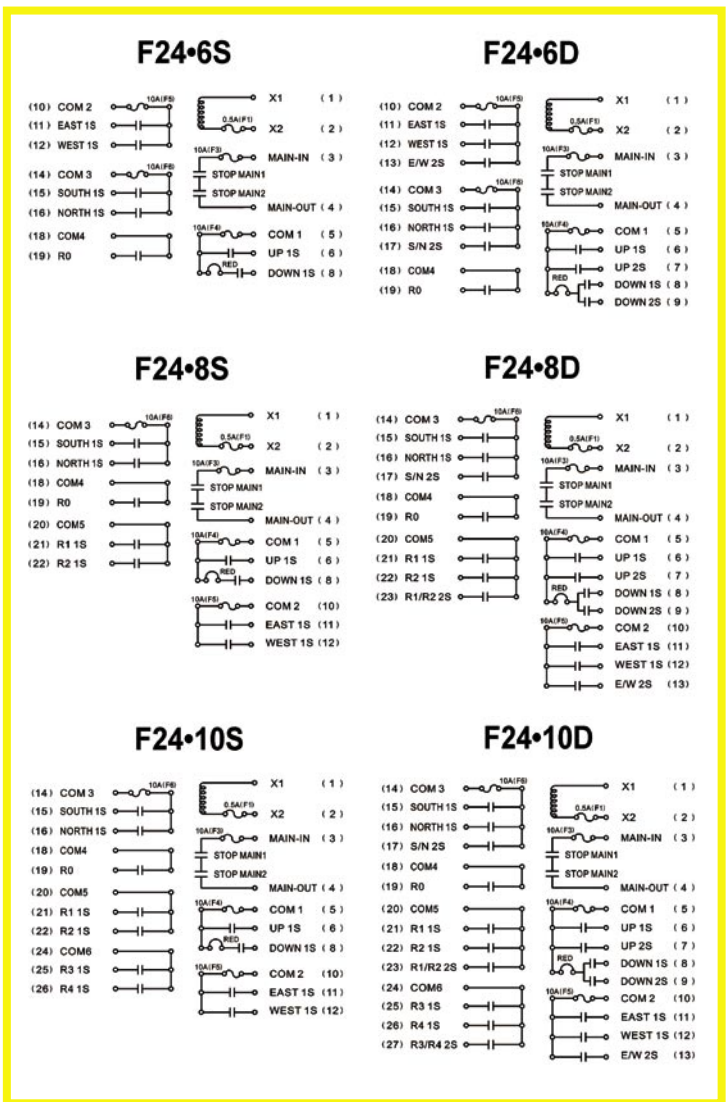
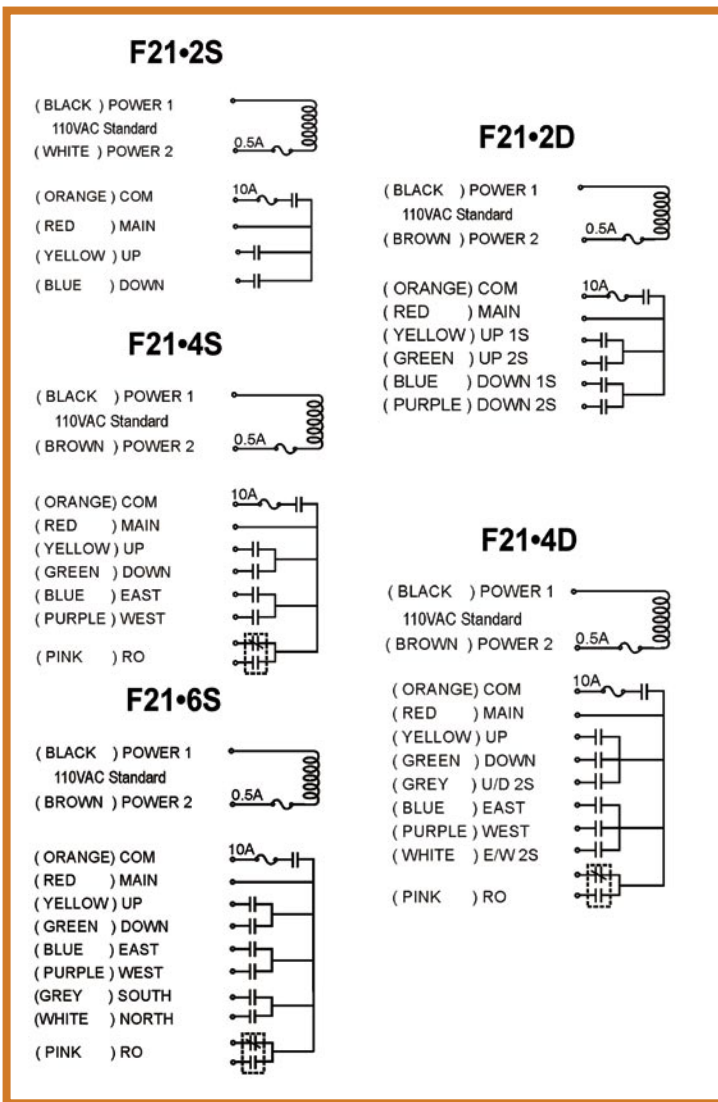
FCC Certified – No License Required

ITL MAKES IT SIMPLE

...for you to enable your equipment with wireless remote control. Upon opening its doors in 1991, Intercontinental Technologies, Ltd. (ITL) set out to make radio remote control installation *inexpensive*, simple, and easy to understand. As a *market leader* in radio remote control innovation we've led the way in making remote controlling industrial equipment *faster, safer, and easier*. You'll be happy to know that our products are almost always in stock – *ready for delivery* and our service department is known for its friendly help and quick turnaround! Call an ITL staff member today to fulfill *your* application needs.....1-800-382-3558. Thank You!

Telecrane® Systems are easy to connect!

Wiring diagrams below • Contact us if you have any questions:
TEL 847-426-9597 • FAX 847-426-9724 • www.telecrane.com



For button/relay programmability see manual or visit: www.telecrane.com

ITL Customers Write In

I would like to take this opportunity to tell you, we greatly appreciate all the hard work that your sales service staff does for our company...very impressed by your courteous employees, quality service, quick repairs, excellent processing of paperwork and the extra mile your company is willing to go...look forward to another prosperous year working with you.

Distributor from Oregon

After using many different radios and troubleshooting them, we have found Telecrane to be the most reliable...we have the installation time down to less than 2 hours. These are very dependable units...we have them in all various environments.

□

Distributor from North Carolina

Getting the **Versatility** and **Functionality** you need...has never been easier!

COMPLETE **F21** and **F24** SYSTEMS

Model	Typical Application	# of Buttons & Steps	Control Voltage	# of Transmitters
F21-2S	Hoist, winches, lifts, doors, conveyors, etc...	2 buttons, 1 step	110/220 V AC	1
F21-2S-DC	Truck equipment, winches, hoists, etc...	2 buttons, 1 step	12-24 V AC/DC	1
F21-2S-2TX	Hoist, winch, lifts, doors, conveyors, etc...	2 buttons, 1 step	110/220 V AC	2
F21-2S-DC-2TX	Truck equipment, winches, hoists, etc...	2 buttons, 1 step	12-24 V AC/DC	2
F21-4S	Monorails, dual hoists, etc...	4 buttons, 1 step	110/220 V AC	1
F21-4S-DC	Truck equipment, monorails, dual hoists, etc...	4 buttons, 1 step	12-24 V AC/DC	1
F21-4S-2TX	Monorails, dual hoists, etc...	4 buttons, 1 step	110/220 V AC	2
F21-4S-DC-2TX	Truck equipment, monorails, dual hoists, etc...	4 buttons, 1 step	12-24 V AC/DC	2
F21-2D	Hoists, lifts, etc...	2 buttons, 2 step	110/220 V AC	1
F21-2D-DC	Truck equipment, hoists, lifts, etc...	2 buttons, 2 step	12-24 V AC/DC	1
F21-2D-2TX	Hoists, lifts, etc...	2 buttons, 2 step	110/220 V AC	2
F21-2D-DC-2TX	Truck equipment, hoists, lifts, etc...	2 buttons, 2 step	12-24 V AC/DC	2
F21-4D	Monorails, dual hoists, etc...	4 buttons, 2 step	110/220 V AC	1
F21-4D-DC	Truck equipment, monorails, dual hoists, etc...	4 buttons, 2 step	12-24 V AC/DC	1
F21-4D-2TX	Monorails, dual hoists, etc...	4 buttons, 2 step	110/220 V AC	2
F21-4D-DC-2TX	Truck equipment, monorails, dual hoists, etc...	4 buttons, 2 step	12-24 V AC/DC	2
F21-6S	Overhead cranes, dual hoist monorails, etc...	6 buttons, 1 step	110/220 V AC	1
F21-6S-DC	Truck equipment, dual hoist monorails, etc...	6 buttons, 1 step	12-24 V AC/DC	1
F21-6S-2TX	Overhead cranes, dual hoist monorails, etc...	6 buttons, 1 step	110/220 V AC	2
F21-6S-DC-2TX	Truck equipment, dual hoist monorails, etc...	6 buttons, 1 step	12-24 V AC/DC	2
F24-6S	Overhead cranes, dual hoist monorails, etc...	6 buttons, 1 step	110/220 V AC	2
F24-6D	Overhead cranes, dual hoist monorails, etc...	6 buttons, 2 step	110/220 V AC	2
F24-8S	Overhead cranes with A, B, A+B	8 buttons, 1 step	110/220 V AC	2
F24-8D	Overhead cranes with A, B, A+B	8 buttons, 2 step	110/220 V AC	2
F24-10S	Multiple overhead cranes and hoists	10 buttons, 1 step	110/220 V AC	2
F24-10D	Multiple overhead cranes and hoists	10 buttons, 2 step	110/220 V AC	2
F24-12S	Multiple overhead cranes and hoists	12 buttons, 1 step	110/220 V AC	2
F24-12D	Multiple overhead cranes and hoists	12 buttons, 2 step	110/220 V AC	2

ITL can provide solutions for more complex applications. Our F24-J has two 2-axis 5-step joysticks, 6 single-step buttons, and 4 toggle switches. Please visit www.telecrane.com for more details or call to discuss your specific needs: 800 • 382 • 3558

F21 and **F24** Replacement and Spare **TRANSMITTERS**

Transmitter

F21-2S-TX	works with the following systems:	F21-2S,	F21-2S-2TX,	F21-2S-DC,	F21-2S-DC-2TX
F21-4S-TX	works with the following systems:	F21-4S,	F21-4S-2TX,	F21-4S-DC,	F21-4S-DC-2TX
F21-2D-TX	works with the following systems:	F21-2D,	F21-2D-2TX,	F21-2D-DC,	F21-2D-DC-2TX
F21-4D-TX	works with the following systems:	F21-4D,	F21-4D-2TX,	F21-4D-DC,	F21-4D-DC-2TX
F21-6S-TX	works with the following systems:	F21-6S,	F21-6S-2TX,	F21-6S-DC,	F21-6S-DC-2TX

F24-6S -TX	for use with	F24-6S	system
F24-6D -TX	for use with	F24-6D	system
F24-8S -TX	for use with	F24-8S	system
F24-8D -TX	for use with	F24-8D	system
F24-10S-TX	for use with	F24-10S	system
F24-10D-TX	for use with	F24-10D	system
F24-12S-TX	for use with	F24-12S	system
F24-12D-TX	for use with	F24-12D	system

place distributor label here

• ITL Intercontinental Technologies, Ltd • 558-2 Plate Drive, East Dundee, IL 60118 •
TEL 847-426-9597 • FAX 847-426-9724 • www.telecrane.com